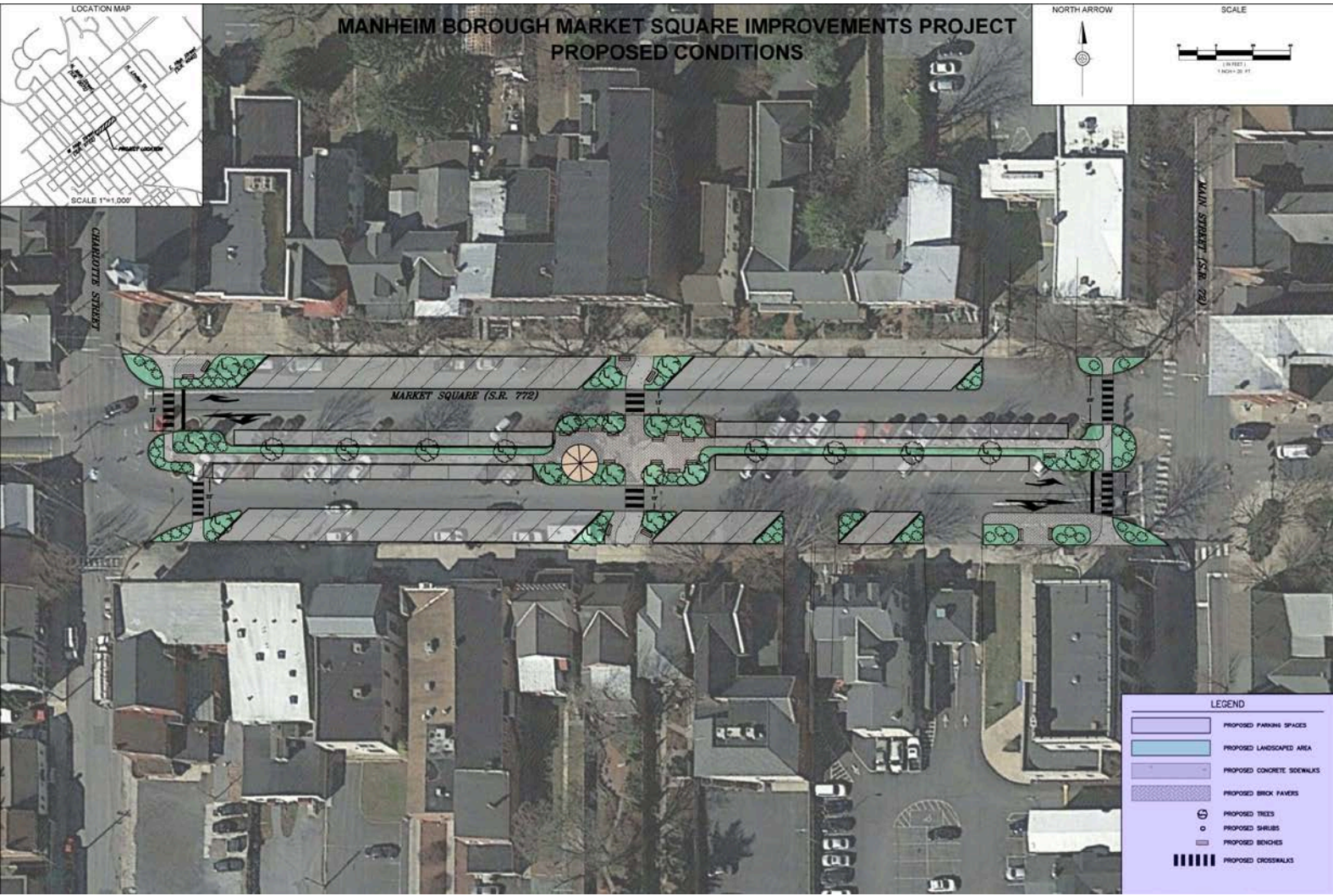




# Market Square Improvements Project

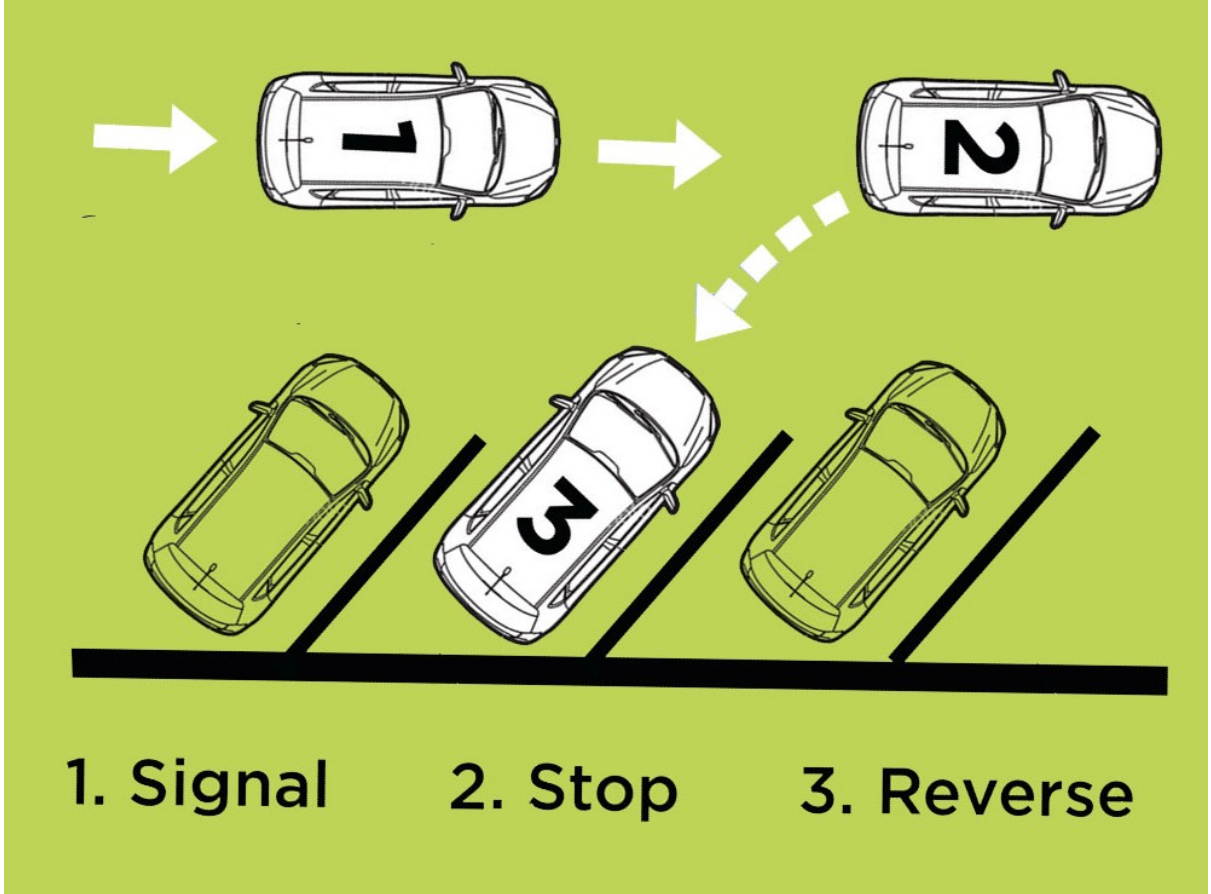
Public Works Committee Meeting 3/29/22

# Conceptual Rendering



# What is back-in angle parking?

\*Also known as reverse-angle parking



# Why back-in angle parking?

## Pros

- SAFETY- Better view of traffic for drivers exiting the parking space
- Eliminates difficulty of backing into moving traffic
- Ability to access trunk from sidewalk rather than travel lane
- Open car doors channel passengers to the sidewalk and block you from the street
- Additional maneuvering space is not required
- Wheelchair users can unload from vehicle's side or rear, away from traffic lane

## Cons

- Unfamiliarity with this configuration
- Parked vehicles may overhang the sidewalk
- Potential congestion with initial stopping and backing maneuver (like parallel parking)
- Danger of drivers from opposing traffic lane pulling across the road nose first into the parking stall



# Central PA Examples



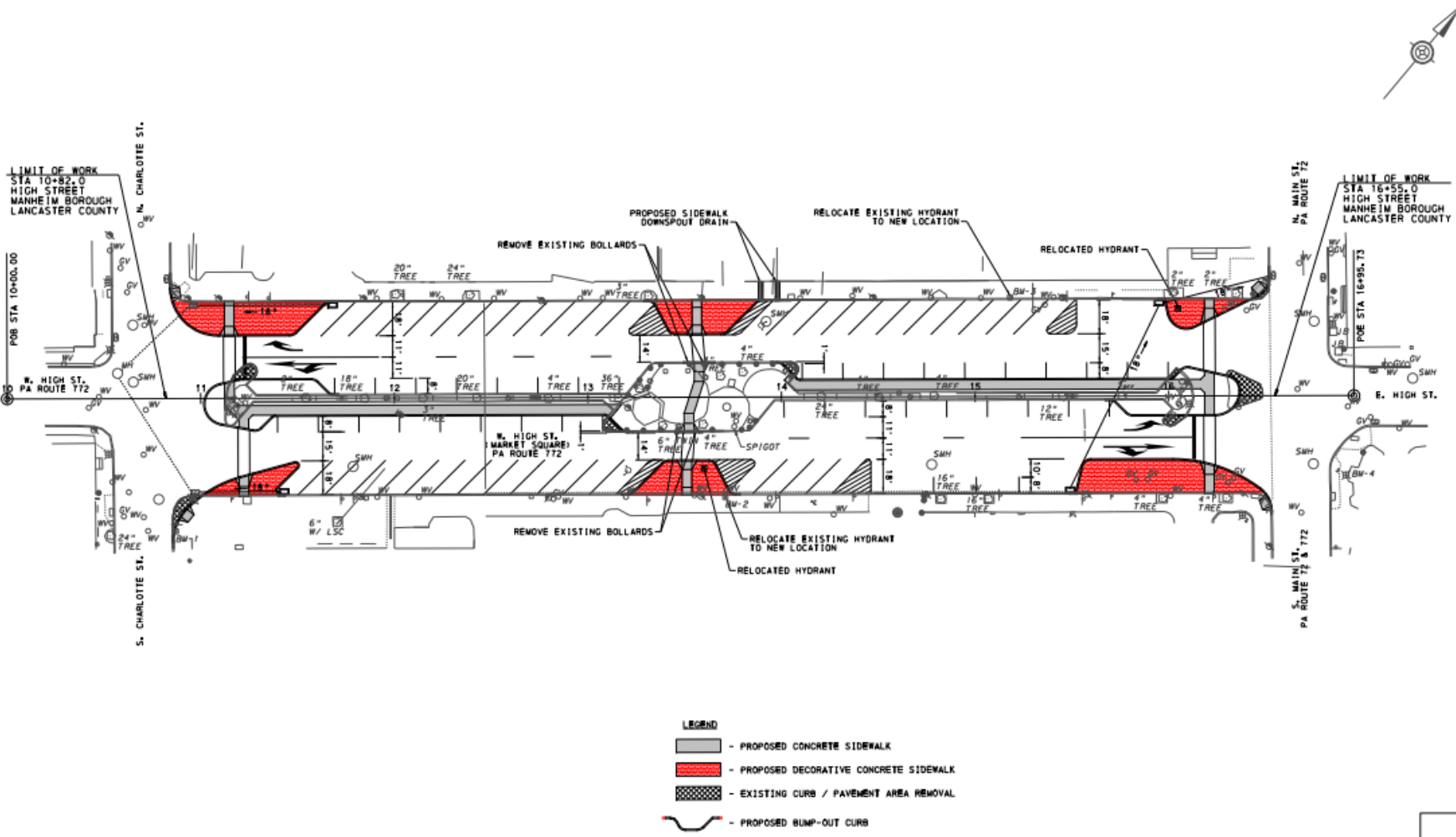
## Locations

- College Ave, City of Lancaster (pictured)
- Linglestown Road (SR 0039), Linglestown
- E. Chocolate Ave (SR 0422), Hershey
- E. High Street, Pottstown
- Bedford Street, Carlisle (proposed)

## Lesson Learned:

Maintain visibility of parking stall markings to reduce driver confusion

# Preliminary Engineering Design



- LEGEND**
- PROPOSED CONCRETE SIDEWALK
  - PROPOSED DECORATIVE CONCRETE SIDEWALK
  - EXISTING CURB / PAVEMENT AREA REMOVAL
  - PROPOSED BUMP-OUT CURB

# Final Design- Landscaping options

## Vegetated areas



Example: Broad Street Market- City of Harrisburg

# Questions?

